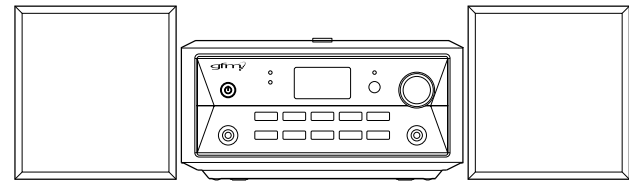




MICRO CD STEREO

ModelNo.: CD6919



Instruction Manual

SAFETY PRECAUTIONS

FCC Information

This device complies with Part 15 of the FCC rules. Operation is subject to the following two conditions:

(1) This device may not cause harmful interference, and (2) This device must accept any interference received, including interference that may cause undesired operation.

NOTE: This equipment has been tested and found to comply with the limits for a Class B digital device, pursuant to part 15 of the FCC Rules. These limits are designed to provide reasonable protection against harmful interference in a residential installation. This equipment generates, uses, and can radiate radio frequency energy and, if not installed and used in accordance with the instructions, may cause harmful interference to radio communications. However, there is no guarantee that interference will not occur in a particular installation. If this equipment does cause harmful interference to radio or television reception, which can be determined by turning the equipment off and on, the user is encouraged to try to correct the interference by one or more of the following measures:

- Reorient or relocate the receiving antenna.
- Increase the separation between the equipment and receiver.
- Connect the equipment into an outlet on a circuit different from that to which the receiver is connected.
- Consult the dealer or an experienced radio/TV technician for help.

WARNING: Changes or modifications to this unit not expressly approved by the party responsible for compliance could void the user authority to operate the equipment.

DO NOT TOUCH THIS LENS
CAUTION: INVISIBLE LASER
RADIATION IS EMITTED
WHEN OPENED AND
INTERLOCKS ARE DEFEATED.

CLASS 1 LASER PRODUCT
APPAREIL À LASER DE CLASSE 1
PRODUCTO LASER DE CLASSE 1
PRODUTO LASER CLASSE 1



This product contains a low power laser device.

WARNING: TO PREVENT FIRE OR SHOCK HAZARD, DO NOT EXPOSE THE UNIT TO RAIN OR MOISTURE. TO AVOID ELECTRICAL SHOCK, DO NOT OPEN THE CABINET. REFER SERVICING TO QUALIFIED PERSONNEL ONLY.

For the Customers In Canada

This apparatus complies with the Class B limits for radio noise emission set out in radio interference regulations.

This Class B digital apparatus complies with Canadian ICES-003.

On Safety

As the laser beam used in this compact disc player could be harmful to the eyes, do not attempt to disassemble the casing. Refer servicing to qualified personnel only.

- Do not put any foreign objects in the disc compartment. If you do so, the laser beam interlock may be defeated allowing the laser to remain on when the lid is opened.

- Do not put any foreign objects in the AC jack. Should any objects or liquids fall into the unit, disconnect the power supply and have the unit checked by qualified personnel before any further operation.

On Operation

Since the CD system offers a wide dynamic range, the peaks of the high level inputs are recorded with high fidelity, and the noise level is very low. Do not turn up the volume while listening to a part of the disc with no audio signals or very low level inputs. If you do so, the speakers may be damaged when the peak level of the sound is played. The lens of the laser should be kept clean. Do not touch the lens or poke at it with your fingers. If you do so, the lens may be damaged and the unit will not operate correctly.

On Use

Never use the unit where it would be subject to:

- Heat sources such as radiators or airducts.
- Direct sunlight.
- Excessive dust.
- Moisture or rain.
- Mechanical vibration or shock.
- Uneven surface.

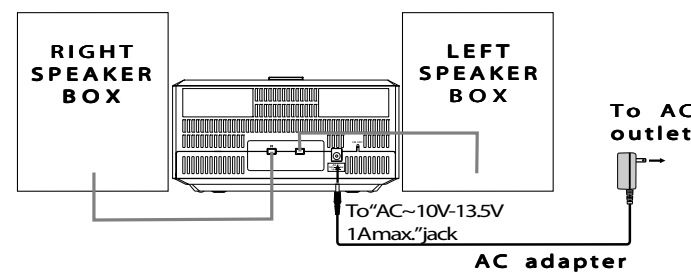
- Do not place any heavy objects on top of the unit.
- When the unit is used with an AC power adaptor, do not wrap the unit in a cloth, blanket, etc. If you do so, the temperature inside and outside the unit may rise considerably, resulting in malfunctioning of the unit.
- If the unit is brought directly from a cold to a warm location, or is placed in a very damp room, the moisture may condense on the lens inside the unit. Should this occur, the unit will not operate. In this case, remove the disc and leave the unit in a warm place for several hours until the moisture evaporates.
- For the unit to operate at its best, it should not be subject to temperatures below 41°F (5°C) or above 95°F (35°C).

SYSTEM CONNECTIONS

SPEAKER CONNECTIONS

Connect the right speaker to the R terminal and the left speaker to the L terminal.

NOTE: Connecting speakers other than the speakers supplied with the unit may damage the unit.



USING THE AC ADAPTER

Using an AC adapter other than the one supplied with the unit may damage the unit. This AC adapter operates on AC 120V~60Hz.

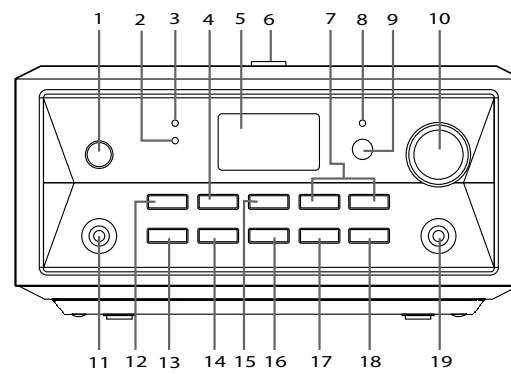
CAUTIONS:

- Before use, ensure the rated voltage of the adapter matches your local voltage.
- The included AC adapter is for use with this unit only. Do not use it with other equipment.
- If you are not going to use the unit for a long time, disconnect the AC adapter from the wall outlet.
- Whenever the AC adapter is plugged in to a wall outlet, electricity is running through the unit, even when the power switch is turned off.

FM ANTENNA

- Do not connect the FM antenna to an outside antenna.

LOCATION OF CONTROLS



- | | |
|---------------------------------------|--------------------------|
| 1. ⏻ STANDBY/ON Button | 10. VOLUME Control |
| 2. TIMER Indicator | 11. Earphone Jack |
| 3. SLEEP Indicator | 12. ⏮⏭ PLAY/PAUSE Button |
| 4. ■ STOP/BAND Button | 13. DISPLAY Button |
| 5. DISPLAY | 14. FUNCTION Button |
| 6. OPEN Knob | 15. ⏪/MEMORY UP Button |
| 7. ⏮⏭ / ⏪ / TUNING ⊕ / TRACK/⏪ Button | 16. PRESET EQ Button |
| 8. ⏻ POWER Indicator | 17. ⏩/PROG/MEM Button |
| 9. Remote Sensor | 18. SLEEP Button |
| | 19. AUDIO IN Jack |

VOLUME ADJUSTMENT

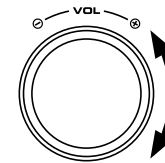
TO ADJUST THE VOLUME

Adjust the VOLUME control to obtain the desired volume.

FOR PERSONAL LISTENING

Connect headphones (Ø3.5mm stereo mini plug) to the PHONES jack. Adjust the VOLUME control to obtain the desired volume.

When headphones are connected, the speakers are automatically disconnected.



CLOCK SETTING

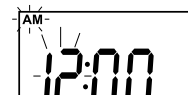
Setting the clock can only be done in STANDBY mode.

- If the unit is plugged in with the supplied AC adapter and the unit is in standby mode, the power indicator lights up.

1. Press and hold the ⏩/PROG/MEM button until the hour digits blink.



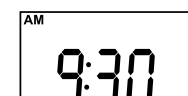
2. Press the ⏮⏭ button to adjust the desired hours and press the ⏩/PROG/MEM button once to confirm, then the minute digits blink.



3. Press the ⏮⏭ button to adjust the desired minutes and press the ⏩/PROG/MEM button once to start clock.



12:00 PM = NOON time, and "PM" appears.



Notes:

- During CD playback, press the DISPLAY button once to display the current time.
- In RADIO mode, press the DISPLAY button once to display the current time.

LISTENING TO THE RADIO

1. Press the ⏻ STANDBY/ON button to turn the unit on.
 2. Press the FUNCTION button to radio mode.
 3. Press the ■ STOP/BAND button to select a band (AM/FM).
 4. Press the ⏮⏭ button to tune in to a station.
- Adjust the volume.

Searching for a Station Automatically

- Press and hold the ⏮⏭ button until the tuner starts searching for a station, then release. After tuning in a station, the search stops.
- The search may not stop at a station with a very weak signal.

Presetting Stations

The unit can store a total of 20 stations in memory (10FM, 10AM). Presetting allows you to tune in to a station directly.

1. Tune in to a desired station.
2. Press the PROG/MEM button. The preset number will blink and the "MEMORY" indicator will be shown on the display.
3. Press the ⏪/MEMORY UP button to select the preset number.
4. Press the PROG/MEM button again to store it in memory.
5. Repeat steps 1-4 to store other stations.

Tuning in to a Preset Station

Press the ■ STOP/BAND button to select AM or FM then press the ⏪ REPEAT/MEMORY UP button to select a preset number.

For Better Reception

FM: Fully unwind the antenna wire. Extend the antenna wire and place it in the position that sounds best.

Note: Do not connect the FM antenna to an outside antenna.

AM: Reposition the unit to get better AM reception.

Note: When the reception is good, the "(STEREO)" icon will appear on the display.

After listening to the radio, press the ⏻ STANDBY/ON button to turn the unit off.

CD PLAYBACK

1. Press the ⏻ STANDBY/ON button to turn the unit on.
2. Press the OPEN knob to open the CD door. Place a disc in the center with the label side up and then close the CD door gently.
3. Press the FUNCTION button to CD mode and "- -" is shown on the display. Then the total track no. is shown on the display.
4. Press the ⏮⏭ PLAY/PAUSE button to start playing.

• Adjust the volume.

To Pause Playback

- Press the ⏮⏭ PLAY/PAUSE button.
- To resume playback, press the ⏮⏭ PLAY/PAUSE button again.

To Stop Playback

- Press the ■ STOP/BAND button.

Skipping to Another Track

- Press either the ⏮⏭ or ⏮⏭ button according to the desired direction. Press the ⏮⏭ button to skip to the start of the current track or skip to previous tracks. Press the ⏮⏭ button to skip to the beginning of the next track.

Locating a Particular Point on a Track

- Keep either the ⏮⏭ or ⏮⏭ button pressed during playback, according to the desired direction, and release at the desired point.

REPEAT PLAYBACK

Repeat Current Track

- Press the ⏪/MEMORY UP button until "REPEAT" blinks on the display. The current track will be played repeatedly.

Repeat the Entire CD

- Press the ⏪/MEMORY UP button until "REPEAT" stops blinking and remains on. All tracks will be played repeatedly.

Cancel Playback Mode

- Press the ⏪/MEMORY UP button until "REPEAT" disappears.

RANDOM PLAYBACK

All tracks on the disc can be played in random order (Using the remote control only).

Random Playback

- Press the RANDOM button on the remote control until "RANDOM" appears on the display. All tracks will be played randomly. After all tracks have played, the unit will stop automatically.

Cancel Random Playback

- Press the RANDOM button on the remote control until "RANDOM" disappears. The unit will return to normal playback.

PROGRAMMABLE CD PLAYBACK

A program of up to 20 tracks can be set to play in a preset order.

1. In CD stop mode, press the PROG/MEM button and the "MEMORY" & "1--" will blink on the display.
2. Press the ⏮⏭ or ⏮⏭ button to select the desired track and press the PROG/MEM button to store the track in memory.
3. To add additional tracks, repeat step 2 (up to 20 tracks).
4. To start playback, press the ⏮⏭ PLAY/PAUSE button.

To check the program:

- Press the ⏮⏭ PLAY/PAUSE button and the ⏮⏭ button. Each time the ⏮⏭ button is pressed, the track number appears on the display.

To change the programmed tracks during program playback:

- Press the ■ STOP/BAND button and press the PROG/MEM button repeatedly to search the program number, then press either the ⏮⏭ or ⏮⏭ button to select the desired track. Press the PROG/MEM button again to register the newly selected track into program.

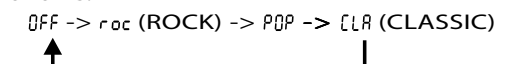
To erase the whole program, do one of the following:

- Press the RADIO button to change to radio mode.
- Press the ■ STOP/BAND button and open the CD door.

PRESET EQ

This system supports a variety of equalizers and sound effects.

During playback, press the PRESET EQ button to select a desired music mode. Each time the PRESET EQ button is pressed, the music mode will be changed to the next one as follows:



TIMER SETTING

The timer function will turn the unit on at a preset time.

TO SET TIMER

1. In standby mode, press and hold the **TIMER** button on the remote control until the **TIMER** indicator blinks.
2. Press and hold the **Ⓞ/PROG/MEM** button until the hour digits blink.
3. Press the **⏮/⏭** button to adjust the desired hours and press the **Ⓞ/PROG/MEM** button once to confirm, then the minute digits blink.
4. Press the **⏮/⏭** button to adjust the desired minutes and press the **Ⓞ/PROG/MEM** button once to confirm, then the **TIMER** indicator stops blinking and remains on.
5. The unit will wake up to "CD" or "RADIO" when the timer reaches the preset time.
6. Press the **⏻ STANDBY/ON** button to turn off the timer.

- For **RADIO** alarm, first tune in to a desired station. Press the **⏻ STANDBY/ON** button to enter standby mode, then set the timer following the above steps.
- For **CD** alarm, first press the **FUNCTION** button to **CD** mode and insert one **CD** into the unit. Press the **⏻ STANDBY/ON** button to enter standby mode, then set the timer.

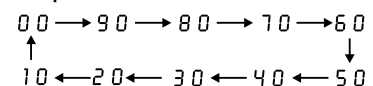
TO CANCEL TIMER

- Press and hold the **TIMER** button on the remote control until the "TIMER" indicator goes out.

SLEEP TIMER SETTING

The sleep timer automatically turns the unit off at a certain time.

1. While the unit is on, press the **SLEEP** button and "OO" appears on the display.
2. Press the **SLEEP** button repeatedly to select the desired sleep time as below:



3. After setting a desired sleep time, the **SLEEP** indicator will light up.
 4. The unit will automatically turn off once it reaches the sleep time.
- To clear the preset sleep time press the **SLEEP** button until "OO" appears. The "SLEEP" indicator goes out.

USING EXTERNAL EQUIPMENT

CONNECTING WITH OTHER OPTIONAL EQUIPMENT

To listen to the audio signal from external equipment, connect the plug to the **AUDIO IN** jack in front panel.

LISTENING TO THE CONNECTED EQUIPMENT

1. Press the **FUNCTION** button to **AUDIO IN** mode.
2. Turn on your audio equipment and play the external source.

DISPLAY FUNCTION

CD MODE

1. During playback, press the **DISPLAY** button repeatedly to shuffle between the **CD** playback mode and the current time.
2. When stopped, press the **DISPLAY** button to shuffle between the total number of **CD** tracks and the current time.

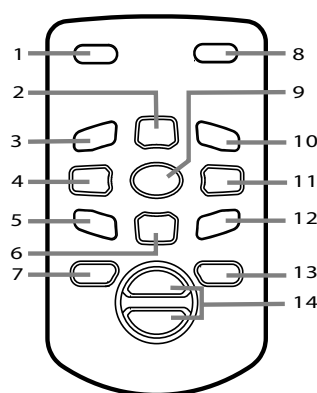
RADIO MODE

- Press the **DISPLAY** button to shuffle between the current radio station and the current time.

AUDIO IN MODE

- Press the **DISPLAY** button to shuffle between the **AUDIO IN** station and the current time.

REMOTE CONTROL

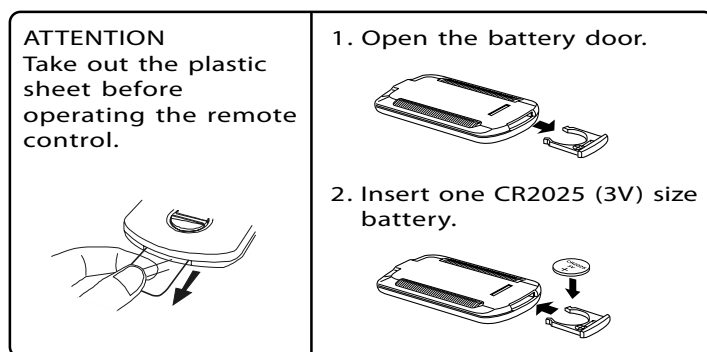


1. **⏻ STANDBY/ON** Button
2. **RANDOM** Button
3. **Ⓞ/MEM.UP** Button
4. **⏮/TUNING/TRACK/Ⓞ** Button
5. **Ⓞ/PROG/MEM** Button
6. **■ STOP/BAND** Button
7. **TIMER** Button
8. **PRESET EQ** Button
9. **⏸ PLAY/PAUSE** Button
10. **DISPLAY** Button
11. **⏭/TUNING/TRACK/Ⓞ** Button
12. **FUNCTION** Button
13. **SLEEP** Button
14. **VOLUME +/-** Buttons

USING THE REMOTE CONTROL CORRECTLY

- Point the remote control at the **REMOTE SENSOR** located on the unit.
- When there is a strong ambient light source, the performance of the infrared **REMOTE SENSOR** may be degraded, causing unreliable operation.
- The recommended effective distance for remote operation is about 19 feet (6 meters).

TO CHANGE REMOTE BATTERY



BATTERY REPLACEMENT

When the battery becomes weak, the operating distance of the remote control is greatly reduced and you will need to replace it.

NOTE: If the remote control is not going to be used for a long time, remove the battery to avoid damage caused by battery leakage corrosion.

WARNING: Do not dispose of battery in fire; battery may explode or leak.

CAUTION: Danger of explosion if battery is incorrectly replaced. Replace only with the same or equivalent type.

MAINTENANCE

CLEANING THE UNIT

Do not use volatile chemicals on this unit. Clean by lightly wiping with a soft cloth.

CLEANING THE CD

If the **CD** skips or will not play, the disc may need to be cleaned. Before playing, wipe the disc from the center outwards with a cleaning cloth. After playing, store the disc in its case.

HANDLING THE DISC

Only touch the **CD** on the edge to avoid finger prints on its surface. Do not stick paper or tape nor write anything on the surface.

TROUBLESHOOTING GUIDE

PROBLEMS

CD

System does not turn on

SOLUTIONS

- Make sure **AC** adapter is secure in the outlet, and outlet has power.
- Make sure you've selected **CD** mode.

Disc in place but unit won't play

- Make sure disc label is facing up.
- Make sure disc is clean.
- Pause mode is activated.
- Disc may be damaged or dirty; check disc.

Disc skips

- Make sure the unit is on a secure spot. Vibration or jarring can cause the disc to skip.

RADIO

Poor FM reception

- Make sure **FM** antenna wire is fully extended.
- Electrical interference in your home can cause poor reception. Move the unit away from them (especially those with motors and transformers).

Poor AM reception

- Rotate the unit horizontally.

Design and specifications are subject to change without notice.

LIMITED WARRANTY

This form describes the protection You will have under this Limited Warranty.

LIMITED WARRANTY PERIOD:

This Limited Warranty begins on the date of purchase of the Covered Product and continues for a period of six months.

WHAT IS COVERED:

We will pay the cost of labor and repair or replacement parts in the event Your Covered Product fails to operate as a result of a mechanical or electrical failure caused by defects in workmanship and/or materials. A mechanical or electrical failure caused by a direct result of a power surge is also covered. Parts will be replaced with those of like kind and quality, and may be new or remanufactured. If the Covered Product cannot be repaired, if the cost of the repair exceeds the original purchase price or if parts are not available due to the age of the Covered Product or discontinued by the manufacturer, the Covered Product will be replaced with a product of similar features.

WHERE YOU ARE COVERED:

Coverage under this Limited Warranty is limited to the United States of America, including the District of Columbia. It does not include any Canadian or U.S. Territories including Guam, Puerto Rico, or U.S. Virgin Islands.

WHAT IS NOT COVERED:

- PRODUCTS NOT ORIGINALLY COVERED BY A MANUFACTURER'S WARRANTY;
- ITEMS THAT ARE STILL COVERED BY THE MANUFACTURER'S WARRANTY, REGARDLESS OF WHETHER THE MANUFACTURER HONORS SUCH WARRANTY;
- PERIODIC CHECKUPS AND/OR PREVENTIVE MAINTENANCE AS DIRECTED BY THE MANUFACTURER EXCEPT AS PROVIDED HEREIN;
- INHERENT PRODUCT DEFECTS THAT ARE THE RESPONSIBILITY OF THE MANUFACTURER OR PARTS FAILURE DUE TO A MANUFACTURER'S RECALL;

- ANY AND ALL PRE-EXISTING CONDITIONS THAT OCCUR PRIOR TO THE EFFECTIVE DATE OF THIS LIMITED WARRANTY AND/OR ANY COSTS TO REPAIR ANY PRODUCT SOLD "AS-IS" INCLUDING BUT NOT LIMITED TO FLOOR MODELS, DEMONSTRATION MODELS, ETC;
- PARTS OR REPAIRS DUE TO NORMAL WEAR AND TEAR AND ITEMS NORMALLY DESIGNED TO BE PERIODICALLY REPLACED BY THE PURCHASER DURING THE COVERED PRODUCT'S LIFE, INCLUDING BUT NOT LIMITED TO BATTERIES, LIGHT BULBS, ETC.;
- DAMAGE FROM ACCIDENT, ABUSE, MISUSE, MISHANDLING, INTRODUCTION OF FOREIGN OBJECTS INTO THE COVERED PRODUCT, UNAUTHORIZED MODIFICATIONS OF ALTERATIONS TO A COVERED PRODUCT, FAILURE TO FOLLOW THE MANUFACTURER'S INSTRUCTIONS, AND EXTERNAL CAUSES INCLUDING THIRD PARTY ACTIONS, FIRE, THEFT, INSECTS, ANIMALS, EXPOSURE TO WEATHER CONDITIONS, WINDSTORM, SAND, DIRT, HAIL, EARTHQUAKE, FLOOD, WATER, ACTS OF GOD OR CONSEQUENTIAL LOSS OF ANY NATURE;
- LOSS OR DAMAGE CAUSED BY WAR, INVASION OR ACT OF FOREIGN ENEMY, HOSTILITIES, CIVIL WAR, REBELLION, RIOT, STRIKE, LABOR DISTURBANCE, LOCKOUT, OR CIVIL COMMOTION;
- INCIDENTAL, CONSEQUENTIAL OR SECONDARY DAMAGES OR DELAY IN RENDERING SERVICE UNDER THIS LIMITED WARRANTY, OR LOSS OF USE DURING THE PERIOD THAT THE COVERED PRODUCT IS AT AN AUTHORIZED SERVICE CENTER OR OTHERWISE AWAITING PARTS;
- ANY PRODUCT USED IN A COMMERCIAL SETTING OR RENTAL BASIS;
- FAILURES THAT OCCUR OUTSIDE OF THE 50 STATES OF THE UNITED STATES OF AMERICA, INCLUDING THE DISTRICT OF COLUMBIA;
- NONFUNCTIONAL OR AESTHETIC PARTS INCLUDING BUT NOT LIMITED TO PLASTIC PARTS, KNOBS, ROLLERS, BASKETS, SCRATCHES, PEELING AND DENTS;
- UNAUTHORIZED REPAIRS AND/OR PARTS;
- COST OF INSTALLATION, SET-UP, DIAGNOSTIC CHARGES, REMOVAL OR REINSTALLATION OF THE COVERED PRODUCT, EXCEPT AS PROVIDED HEREIN;
- ACCESSORIES USED IN CONJUNCTION WITH A COVERED PRODUCT;
- ANY LOSS OTHER THAN A COVERED BREAKDOWN OF THE COVERED PRODUCT;
- SERVICE WHERE NO PROBLEM CAN BE FOUND;
- BREAKDOWNS WHICH ARE NOT REPORTED WITHIN THE TERM OF THIS LIMITED WARRANTY;
- IMPROPER INSTALLATION OF COMPONENTS OR PERIPHERALS;
- CORRUPTION OF ANY RECORDING MEDIA, INCLUDING ANY PROGRAM, DATA OR SETUP INFORMATION RESIDENT ON ANY HARD DRIVES AND INTERNAL OR EXTERNAL REMOVABLE STORAGE DEVICES, AS A RESULT OF THE MALFUNCTIONING OR DAMAGE OF AN OPERATING PART, OR AS A RESULT OF ANY REPAIRS OR REPLACEMENT UNDER THIS LIMITED WARRANTY;
- DAMAGE TO CLOTHING;
- COLOR FADING OF PICTURE FOR ANY TELEVISION;
- BURNED-IN PHOSPHOR (INCLUDING IMAGE GHOSTING), PIXEL BURNOUT NOT IN ACCORDANCE WITH THE MANUFACTURER'S SPECIFICATIONS.

WHAT TO DO WHEN YOUR PRODUCT FAILS TO OPERATE:

- Call the 24-hour customer service toll-free number at (866) 845-9436.

Many oversights, which are not covered under this Limited Warranty, can be due to simple circumstances such as the Covered Product not being switched on, being unplugged, or a fuse blown at the junction box. For a Covered Product that uses batteries as the primary power supply, or a remote control unit, please check that the batteries do not need replacing or recharging.

SERVICE DELIVERABLES:

There is no deductible required to obtain service for Your Covered Product.

OTHER PROVISIONS:

Limit of Liability:

The limit of liability under this Limited Warranty is the least of the cost of (1) the purchase price of the Covered Product excluding tax and delivery costs or (2) authorized repairs not to exceed the purchase price of the Covered Product or (3) replacement of the Covered Product with similar features or (4) reimbursement for authorized repairs or replacement. Upon replacement, there is no longer any obligation for the replaced product under this Limited Warranty.

Limitations of Implied Warranty:

All Implied Warranties which may arise under state law, including all Implied Warranties of Merchantability or Fitness for a particular purpose, are limited to the duration of this Warranty and do not cover incidental or consequential damages. Some states do not allow limitations on how long an Implied Warranty lasts or the exclusion of incidental or consequential damages, so the above limitations or exclusions may not apply to You. This Warranty gives You specific legal rights, and You may also have other rights which vary from state to state.

Transferability and Renewals:

This Limited Warranty is not transferable or renewable.

Subrogation:

If We pay for a loss, We may require You to assign Us Your rights of recovery against others. We will not pay for a loss if You impair these rights to recover. Your rights to recover from others may not be waived.

Arbitration:

In the event of a disagreement between You and Us concerning costs, either of us may make a written demand for arbitration. This must be done within sixty(60)days after the day You filed Your claim. Each of us will select an arbitrator. The two arbitrators will select an umpire. Each of us will pay the expense of the arbitrator We select. The expenses of the umpire will be shared equally. Unless both of us agree otherwise, arbitration will take place in the county and state in which You live. Local rules apply. A majority decision will be binding.

Dist. by Wholesale Merchandisers, Inc.,
2929 Walker, N.W.,
Grand Rapids, MI 49544
Made in China